

Planting 141
2025 Planting History
Prepared by Susan Kleiman

Summary

Name: Welcome Prairie

- Dates Planted: December 11, 2024 - January 17, 2025
- Volunteers, Susan Kleiman and others
- Site History: see below for details
- Total Acreage: 5
 - Dry: 3 acres at 114.8lbs./acre = 344.4 lbs.
 - Savanna: 2 acres at 45+lbs./acre = 90 lbs.
- Total seeding rate of roughly 87 lbs./acre
- Total # of species: 147
- Total amount of seed: 435

Aerial photo from early 2023 before purchase (fine white line around unit).

Pines are the dark green on left (west) side of unit. At the time of seed planting half of the pines were gone and much of the remaining was more open to the sun. A lot of the green on over half the unit is oaks and other hardwoods and understory of large bush honeysuckle.



Site Conditions

Location: Ogle County. Part of SE quadrat of Section 16 Taylor Township.

West side of S. Lowden Rd. Directly north of the driveway of the HQ Barn of Nachusa Grasslands. Land purchased and owned at the time of planting by The Friends of Nachusa Grasslands.

Soil Type

Entirely: 397D Boone Sand, 7-15% slopes.

Topography

The topography has two east west running gentle rises which slope gently in all directions but north, depending on which slope you are on. There is a tiny valley therefore, the bottom of which slopes slightly southeast. There is a level area along the driveway as well as the Lowden Road right-of-way hump running north/south.

Site History

Overgrazed prairie shows in first aerial photo from 1939 with lots of sand blow-outs. Various species of pines were planted in the 1950s/60s. As far as can be seen in the aerial photos it was never plowed. This 4+ acres along with other acreage nearby was sold in lots in the 1980s and 90s. Other tree species begin growing among the pines when grazing is stopped, perhaps around this time. More oaks grew, and honeysuckle shrubs got very thick after some pines were harvested in the early 2000s. This unit was purchased by The Friends of Nachusa Grasslands in 2023.

Site Preparation

In the winter of 2023/2024, the non-native shrub understory was mowed with the Fecon head mounted on the Caterpillar skidsteer (thank you Phil Nagorny and Bill Kleiman). Some pine trees, black cherry, hackberry and a few black oaks were removed by a large forestry “feller-buncher” run by John Deere. Some logs went to a local sawmill. Follow up of basal bark application of Garlon-4 applied to resprouting shrubs/trees was done by volunteers. In summer some areas the non-native grass was killed with grass herbicide. Other weeds and overabundant natives (poison ivy) were spot sprayed with various herbicides to attempt control. Also junk, including a defunct camper were removed (thank you Bill and crew). Brush and limbs were piles by machine and then burned. A second pile has been made by volunteers.

In 2024 there were 513 volunteer hours on 21 workdays by at least 58 volunteers. In addition, Susan Kleiman volunteered other hours that she did not track.

Seed Mixes

Seed was hand collected by Susan and many volunteers during the 2024 growing season. Seed was milled by Susan and mixed by several volunteers. 435 pounds were collected. We split the species into dry mix (344.38 pounds) and savanna mix (90.38 pounds).

Seed Planting

Seed planting was started approximately on December 11, 2024 and finished approximately on January 17, 2025. Most was planted with the pendulum broadcaster on the Kabota tractor by, Steward, Susan Kleiman, much of it on a half inch of snow. Some was planted by hand-broadcast and step in by volunteers.

Seed species list

There were 147 species.

WELCOME PRAIRIE: Scientific name

Achilea millefolium

Agalinis tenuifolia

Agastache scrophulariifolia

Agrostis hyemalis

Allium cernuum

Amorpha canescens

Anemone cylindrica

Anemone triflorum

Antennaria neglecta

Antennaria plantaginifolia

Aquilegia canadensis

Aristida purpurea

Arnoglossum atriplicifolium

Artemisia campestris caudata

Asarum canadense

Asclepias amplexicaulis

Asclepias verticillata

Asclepias viridiflora

Aureolaria grandiflora var pulchra

Besseyia bullii

Bouteloua curtipendula

Bouteloua hirsuta

Bromus kalmii

common name

yarrow

slender false foxglove

purple hyssop

ticklegrass

nodding onion

leadplant

thimbleweed

prairie smoke

field pussytoes

plantain-leaved pussytoes

wild columbine

three-awn grass
(arrowfeather)

pale Indian plantain

beach wormwood

wild ginger

sand milkweed

whorled milkweed

short green milkweed

large-flowered false foxglove

kittentails

side-oats grama grass

mustache grama grass

prairie brome

Camassia scilloides	wild hyacinth
Campanulastrum americanum	bellflower
Carex bicknellii	oval sedge spp.
Carex muhlenbergii	sand sedge
Carex pennsylvanica	Penn sedge
Carex tenuis	path rush, bit in dry mix
Castilleja sessiliflora	downy yellow painted cup
Ceanothus americanus	New Jersey tea
Chamaecrista fasciculata	partridge pea
Cinna arundinacea	stout wood reed
Coreopsis lanceolata	lanced-leaved coreopsis
Coreopsis palmata	prairie coreopsis
Cryptotaenia canadensis	honestwort
Cyperus lupulinus	slender sand sedge
Dalea purpureum	purple prairie clover
Danthonia spicata	poverty oats
Desmodium illinoense	Illinois tick trefoil
Dichanthelium latifolium	broad-leaved panic grass
Dodecatheon meadii	shooting star
Drymocallis argula	prairie cinquefoil
Echinacea pallida	pale purple coneflower
Elymus canadensis	Canada rye
Elymus hystrix	bottlebrush grass
Elymus villosus	silky rye
Erigeron pulchellus	Robin's plantain
Erigeron strigosus	daisy fleabane
Eupatorium altissimum	tall boneset
Euphorbia corollata	flowering spurge
	viscid grass-leaved
Euthamia gymnospermoides	goldenrod
Festuca subverticillata	nodding fescue
Gaura biennis	biennial gaura
Gentiana purberulenta	prairie gentian
Geranium maculatum	wild geranium
Glyceria striata	fowl manna grass
Helianthus mollis	downy sunflower
Helianthus occidentalis	western sunflower
Helianthus pauciflorus	prairie sunflower
Helianthus spp	woodland sunflowers
Heliopsis helianthoides	false sunflower
Hesperostipa spartea	porcupine grass
Heterotheca villosa	hairy goldenaster
Heuchera richardsonii	prairie alumroot

Hieracium longipilum	grandpa hawkweed
Hyopsis hirsuta	yellow star grass
Juncus interior	path rush
Juncus sp.	woodland juncus
Juncus spp.	upland rushes
Koeleria macrantha	June grass
Krigia biflora	two-flowered Cynthia
Krigia virginica	dwarf dandelion
Lechea minor	small pinweed
Lechea spp	pinweeds
Lechea stricta	bushy pinweed
Lespedeza capitata	round-headed bushclover
Lespedeza leptostachya	prairie bushclover
Liatris aspera	rough blazingstar
Liatris cylindracea	dwarf blazingstar
Linum sulcatum	grooved yellow flax
Lithospermum incisum	fringed puccoon
Lobelia inflata	Indian tobacco
Lobelia spicata	pale spiked lobelia
Lupinus perennis	wild lupine
Luzula multiflora	wood rush
Monarda punctata	horse mint
Nuttallanthus canadensis	blue toadflax
Oligineuron album	stiff white aster/goldenrod
Onothera clelandii	sand evening primrose
Onosmodium molle	marbleseed
Osmorhiza claytonii	hairy sweet cicely
Oxalis violacea	violet wood sorrel
Packera plattensis	prairie ragwort
Panicum leibergii	Leiberg's panicum
Panicum sp.	woodland panic grass
Panicum spp.	various panicums
Parthenium intergrifolium	wild quinine
Paspalum setaceum	hairy lens grass
Penstemon grandiflora	large flowered penstemon
Penstemon pallidus	pale beardtongue
Persicaria virginiana	jumpseed
Plantago patagonica	wooly plantain
Plantago virginica	dwarf plantain
Polygala polygama obtusata	purple milkwort
Polygala sanguinea	field milkwort
Polytaenia nutallii	prairie parsley
Prenathes alba	white lettuce

Pseudognaphalium obtusifolium	sweet everlasting
Rosa carolina	pasture rose
Rudbeckia hirta	black-eyed Susan
Ruellia humilis	hairy wild petunia
Salix humilis	prairie willow
Schizachyrium scoparium	little bluestem
Scrophularia spp.	figworts
Scutellaria ovata	heart-leaved skullcap
Scutellaria parvula	small skullcap
Silene antirrhina	sleepy catchfly
Silene stellata	starry campion
Silphium intergrifolium	rosinweed
Sisyrinchium campestris	blue-eyed grass (iris)
Solidago missouriensis	Missouri goldenrod
Solidago nemoralis	old-field goldenrod
Solidago speciosa	showy goldenrod
Solidago ulmifolia	elm-leaved goldenrod
Sporobolus heterolepis	prairie dropseed
Symphotrichum drummondii	Drummond's aster
Symphotrichum ericoides	heath aster
Symphotrichum lateriflorum	calico aster
Symphotrichum oblongifolius	aromatic aster
Symphotrichum oolentangiensis	sky-blue aster
Symphotrichum pilosum	hairy aster
Symphotrichum sericeum	silky aster
Symphotrichum shortii	Short's aster
Tarritis glabra	tower mustard
Tephrosia virginiana	goat's rue
Tradescantia ohiensis	Ohio spiderwort
Triodanis perfoliata	Venus's looking glass
Triosteum sp	wild coffee
Verbena stricta	hoary vervain
Verbena urticifolia	hairy white vervain
Viola pedata	bird foot violet
Viola pubescens	yellow violet
Viola sagittata	arrow-leaved violet
Zizia aptera	heart-leaved Alexander
Zizia aurea	golden Alexander

Plants already noted on the unit

35 native forbs, 15 weed forbs, 11 native grasses, at least 5 non-native grasses, and 20 trees, shrubs, and vines (of which 3 non-native shrubs, 2 trees) as well as several mosses, ferns, mushrooms.

Trees:

Black Oak (*Quercus velutina*)
Bur Oak (*Quercus macrocarpa*)
White pine (planted in the '50s)
Red pine also planted, will be removed winter 2024/2025
Hackberry, occasional
Wild black cherry
Mulberry hybrid
Eastern red cedar (*Juniperus virginiana*)

Shrubs:

Bush honeysuckle (*Lonicera maackii*)
Multiflora rose (*Rosa multiflora*)
Barberry (*Berberis thunbergii*) one found and sprayed
Dewberry (*Rubus flagellaris*)
Black raspberry (*Rubus occidentalis*)
Blackberry (*Rubus allegheniensis*)
Missouri Gooseberry (*Ribes missouriensis*)
Choke cherry (*Prunus virginiana*)

Vines:

Poison ivy (*Toxicodendron radicans*)
Virginia creeper (*Parthenocissus quinquefolia*)
Riverbank Grape (*Vitis riparia*)
Greenbriar (*Smilax hispida*)

20

Grasses & Sedges:

Non-native:

Brome grass, Orchard grass, Various lawn grasses: Festuca, also Schedonorus arundinacea probably, chess (about 5 species ID'd).

Native:

Pennsylvania sedge (*Carex pennsylvanica*)
June grass
Carex blanda
Little bluestem
Indian grass

Carex muhlenbergii
Fox tail
Poverty Oats
Juncus
Old witch grass or similar
Panicums?
11

Weed Forbs:

Creeping Charlie (Glechoma)
Motherwort
Speedwell (Veronica sp.)
Black medic
Dandelion
Evening Lychnis (weedy bladder campion)
Mullein
Salsify
Queen Anne's Lace
Sheep sorrel
Garlic mustard (will disappear with burning)
Smartweed (Ladies thumb?)
Catnip
Deptford Pink
Japanese Hedge Parsley (Torilis japonica) Pulled summer 2024, new weed for Nachusa!
15

Native Forbs:

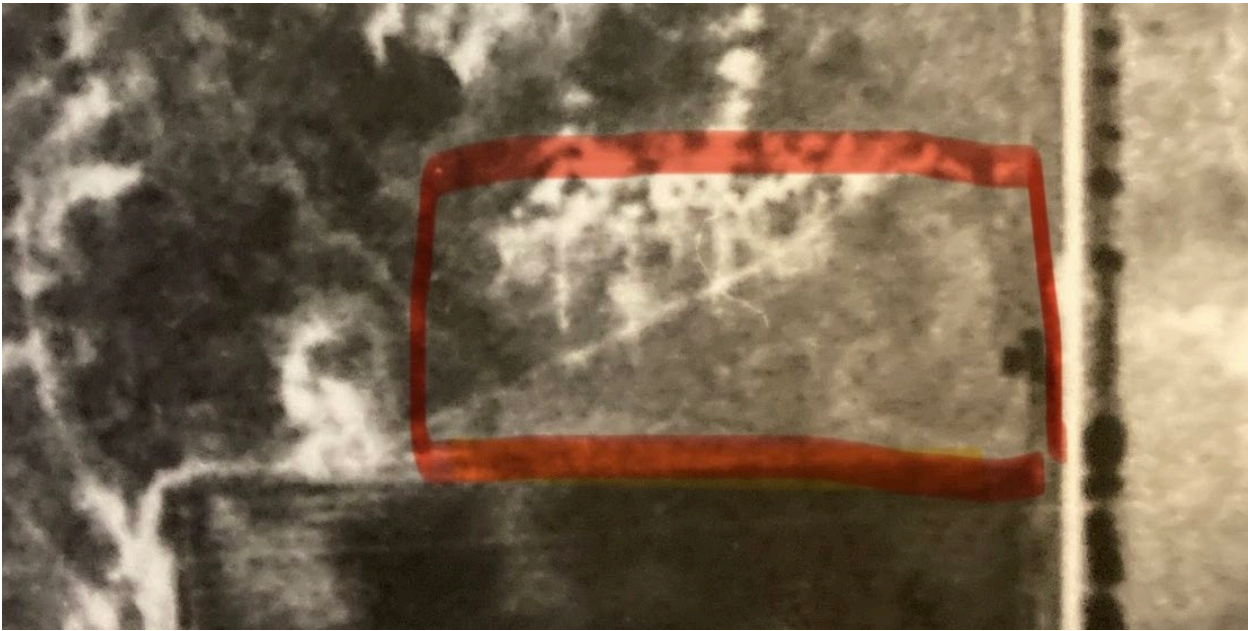
Cream gentian
Prairie Ragwort (Packera plattensis)
Wild bergamot (Monarda fistulosa)
Sweet cicely (Ozmorhiza claytonii)
Yarrow (Achillea millefolium)
Wild strawberry (Fragaria vesca)
Plains grass-leaved goldenrod (Euthamia gymnospermoides)
Chickweed sp. (maybe weed?)
Bedstraw sp.
Rosinweed (Silphium integrifolium)
Yellow Coneflower (Ratibida pinnata)
Beach wormwood (Artemisia campestris)
Small goldenrod sp
Golden Aster (Heterotheca camporum)
Common milkweed (Asclepias syriaca)
Spiderwort (Tradescantia ohiensis)
Rough Blazingstar (Liatris aspera)

Hoary Vervain (*Verbena stricta*)
Lespedeza leptostachya (planted, Federal Endangered Plant)
White snakeroot (*Ageratina altissima*)
Pokeweed (*Phytolacca americana*)
Pasture Thistle (*Cirsium discolor*)
Thimbleweed (*Anemone cylindrica*)
Grass-leaved goldenrod (*Euthamia gymnospermoides*)
Stiff goldenrod (*Oligoneuron rigidum*)
Flowering spurge (*Euphorbia corollata*)
Hairy wild licorice (*Galium ciraezans* var. *hypomaculum*)
Black nightshade – (*Solanum americanum*) or the eastern black nightshade (*Solanum
Emulans*) - annual
Mare's tail/Horseweed (*Conyza canadensis*) - annual
Stickseed (*Hackelia virginiana*)
Smartweeds (*Persicaria* spp)
Lamb's quarters/goosefoot (*Chenopodium* sp) - annual
Enchanter's Nightshade (*Circaea lutetiana*)
Wild lettuce sp.
Avens sp.
35

Non-flowering plants:

Moss
Ebony spleenwort (fern)
Mushrooms

Aerial photo from 1939:



Aerial photo from 1964:

