

## Planting 76 – Clear Creek Prairie – 2007

Text by Bill Kleiman, map by Nate Hill, seed harvest and list by Chris Hauser.  
May 3, 2007

Description: 8-acres of row crop ground that was last in corn and has been in a corn soybean rotation for decades. This should be the planting that has a north bound of Stonebarn road, an east bound of the Clear Creek, a west bound of a planting done in 2006 and a south bound of the old pasture. The soil type is dry mesic with mesic along the creek bottom and running up to a perched wetland in the southwest corner of the field. [Nate: Would you add approximately where the tiles lines were located on the map below. Also, can you give approximate location of dry vs. mesic/wet areas.]

### History:

The farm was purchased by Bruce Scherger in the 1970s. He said there was a very wet area in the northwest corner of this planting that had cat tails and willows. It was very wet. He hired a local tiler to install plastic drain tile from this wet spot east down to Clear Creek. Another tile line went from the creek west past the driveway and then southwest up a drainage way.

### Seed Collected:

During the summer of 2006 Chris Hauser with help from Becky Hartman harvested a lot of seed. That list of species will be included in this report.

### Planting preparation and description:

After the corn was harvested in the fall of 2006 we mowed the stubble down with a batwing 12 foot mower. We then burned off that stubble. We then took out many trees that were on the east and south edge of the planting. Maybe 100 trees. Bill Kleiman, Nate Hill, Austin Webb, Nathan Bremer, and Cody Considine worked on this. It was a lot of work. We used a bobcat tree shear, grapple and stump grinder. We used the tractor grapple, and lots of chainsaws. All stumps cut were treated with herbicide. The trees were piles in three piles in the field and burned.

By this time it was December 2006 and we decided to remove the tile system. We rented a mini trackhoe and with the help of Bruce Scherger finding us the outlets we started digging. We found the black tile hard to see and the mini digger was too small. We made a mess of things and called in Bill Nordman with his big trackhoe. With that long reach he was able to scrap away dirt layer by layer and expose the tile without tearing it out too soon. Winter came in one weekend and the project was frozen until April 2007. Bill N returned in mid-April and dug up the remaining tile, and then filled it all back in with his new dozer.

Nordman also pushed field dirt up to the south fencerow hump that effectively hid the fake looking fence row step down there. Nordman also did a good job of getting rid of the driveway that ran north south right up the middle of the 80-acre tract up to the old

house. He did this by creating a small trench on either side of the driveway and pushing the driveway rock into the trenches, and then moving dirt over the drive. Bill commented that there was a lot of rock in that driveway and he could not bury it all. Looked good enough to me.

On about April 20, 2007 Nate Hill used the Furst harrow and went around the field once. Some areas crumbled nicely, much of the north end was hard packed even after the harrow.

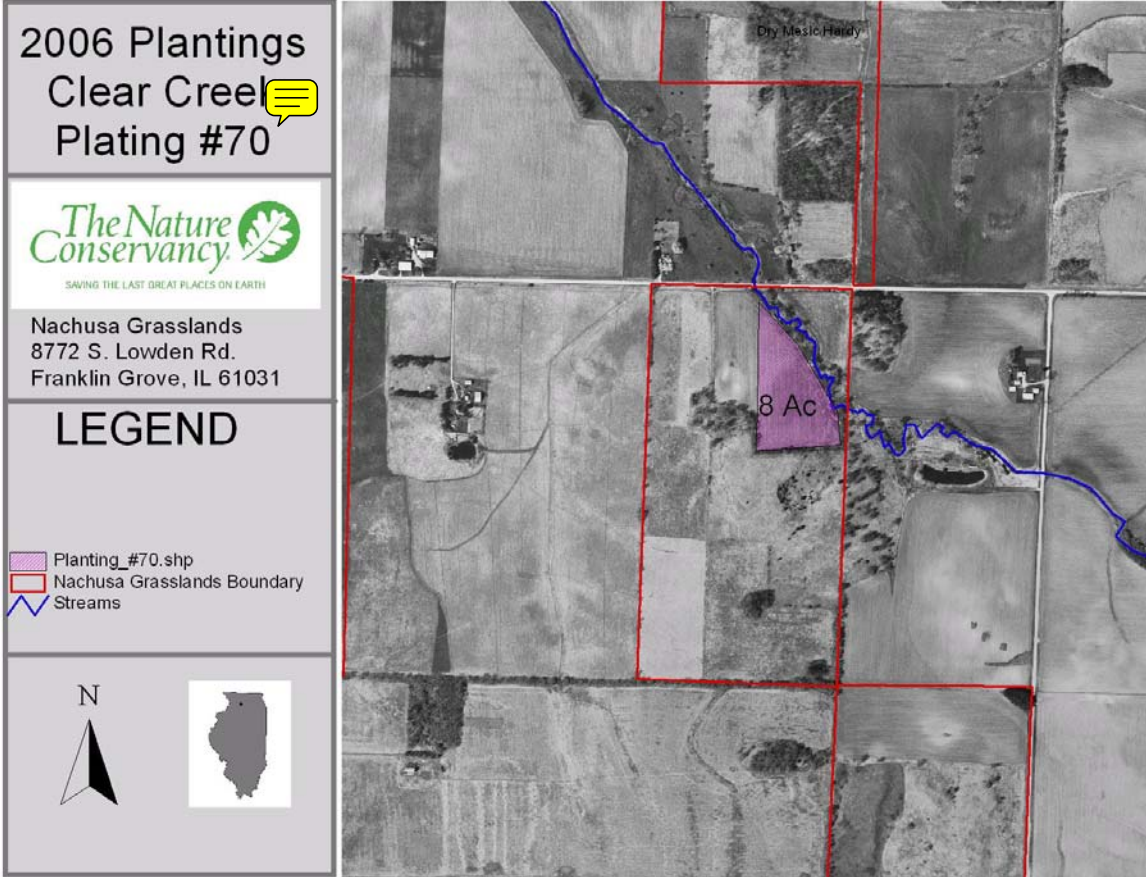
On April 24, 2007 Bill Kleiman used an antique New Idea gravity seed box planting pulled by a Kawasaki Mule UTV to plant the seed mixes. There was 139 pounds of dry mix for the dry portions of the field. There was 70 pounds of mesic/wet mix for the creek edge and the tile line areas. This would be 209 pounds on 8 acres or about 26 pounds per acre over the 8 acres. I ran the planted dry mix over the entire field as the wet area was not so big and there seemed enough seed. I put more dry mix in the dry areas by running over them two and three times. This was a new seeder and we don't have a foam marker on it yet so at times I was unsure of overlap. By doing all the field at least twice it should work out good.

The mesic seeding was done Monday April 30, 2007. I ran around this sections three times. I also seeded the driveway with a mesic mix that was left for this purpose from the 2005 harvest. There was about 30 pounds of little bluestem grass added between the two mixes, an a 40 pound barrel of Canada rye was added between the dry and mesic/wet mixes.

On April 30, 2007 I ended that day by Furst harrowing planting 70 a second time to help incorporate the seed. The ground had taken on a hard coating after rains of the last week.

On December 7, 2007 Bill Kleiman over seeded onto this "end of first year planting" about 30 pounds per acre more from two seed mixes. One seed mix is dry mesic, the other wet. Of the wet mix mix 8 pounds was from Hartmans and 82 pounds from crew wet mix. The dry mesic mix of 70 pounds was from Hartmans. The mesic mix was the crew mesic mix of 2007. I mixed the dry and dry mesic mix together and planted them in the dry half of the planting. The wet mix went where the tile lines were and along the creek side. We only added seed to the field, not to the remnant wetland next to the field. I used the New Idea gravity seeder with the GPS system, but there was 5 inches of snow on the ground so I could see the nice distribution of seed on the snow.

Map



HARTMAN SEED LIST FOR CLEAR CREEK PRAIRIE PLANTING ~~70~~ Clear Creek Species List

This seed was broadcast December 7, 2007 by Bill Kleiman using New Idea gravity box. There was 5 inches snow on ground.

Actinomeris alternifolia	Wingstem
Agilinis tenuifolia	False Foxglove wet pink
Allium cernuum	Onion Nodding
Andropogon scoparium	Little Bluestem
Anemone cylindrica	Thimbleweed
Aristida purpurascens	Arrow feather
Artemisia caudata	Beach Wormwood
Amorpha canescens	Lead Plant
Anemone cylindrica	Thimbleweed
Asclepias verticillata	Whorled Milkweed
Aster ericoides	Heath Aster
Aster nova-angliae	New England Aster
Aster praealtus	Willow Aster
Baptisia leucantha	White Wild indigo
Bouteloua curtipendula	Side Oats
Bouteloua hirsuta	Mustache Grass
Cacalia (tuberosa) plantaginea	Prairie Indian Plantain
Cacalia suaveolens	Sweet Indian Plantain
Chelone glabra	Turtlehead
Coreopsis palmata	Coreopsis prairie
Coreopsis tripteris	Tall Coreopsis
Dodecatheon meadia	Shooting star
Echinacea pallida	Pale Purple Coneflower
Elymus canadensis	Canada Rye
Elymus villosus	Silky Rye
Eryngium yuccifolium	Rattlesnake Master
Eupatorium maculatum	Spotted Joe Pye Weed
Euphorbia corollata	Flowering Spurge
Gentiana crinita	Fringed Gentian
Gnaphalium obtusifolium	Sweet Everlasting Oldfield
Helenium autumnale	Sneezeweed
Helianthemum canadense	Frost weed

Helianthus occidentalis	Western & Naked Sunflower
Heliopsis helianthoides	False Sunflower
Hypericum punctatum	St John spotted
Hypericum pyramidatum	St. John's wort Great
Koeleria cristata	June Grass
Kuhnia eupatoriodes	False Boneset
Lespedeza capitata	Round Headed Bush Clover
Liatris aspera	Rough Blazing Star
Liatris pycnostachya	Prairie Blazing star
Lobelia inflata	Indian Tobacco
Lobelia siphilitica	Great Blue Lobelia
Lysimachia quadrifolia	Loose Strife Whorled
Monarda fistulosa	Bee Balm - Wild Bergamot
Parthenium integrifolium	Quinine
Penstamen digitalis	Foxglove Beard Tongue
Petalostemum purpureum	Purple Prairie Clover
Potentilla arguta	Prairie Cinquefoil
Pycnanthemum tenuifolium	Slender Mountain Mint
Rosa carolina	Rose
Rudbeckia hirta	Blackeyed Susan
Rudbeckia subtomentosa	Sweet Blackeyed Susan
Solidago graminifolia nuttallii	Grass Leaved Goldenrod
Solidago nemoralis	Oldfield Goldenrod
Solidago speciosa	Showey Goldenrod
Sporobolis heterolepis	Drop Seed
Stachys palustris	Woundwort
Tephrosia virginiana	Goats Rue
Triosteum perfoliatum	Wild Coffee
Verbena hastata	Blue Vervain
Verbena stricta	Hoary Vervain
Vernonia fasciculata	Ironweed
Veronicastrum virginicum	Culvers Root
Zizia aurea	Golden Alexander

Chris Dry Mix (Left over06)	19.1
BH Dry Mix 1	20.94
BH Dry Mix 2	29.78
<b>DRY</b>	<b>69.82</b>

BH Wet Mix 1	3.81
BH Wet Mix 2	4.24
<b>WET</b>	<b>8.05</b>